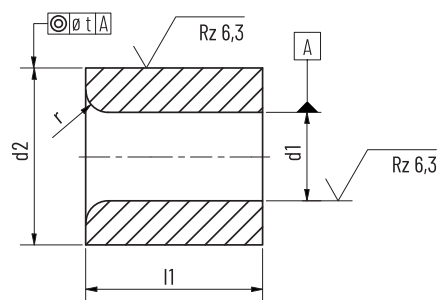


PUNCH GUIDE BUSH

DIN 9845, type C



Item no.
5411.

Inside and outside grinded in tolerance, with insertion chamfer.

Hardness
HRC 62 + 2

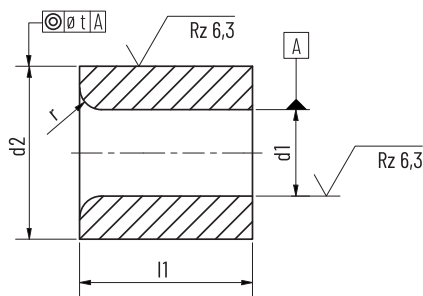
Material
Case-hardened steel as chosen by manufacturer.

d_1 H7	d_2 n6	l_1	r	t
2.1-3	7	12	1	0,01
3.1-4	8	12	1	0,01
4.1-5	10	16	1	0,01
5.1-6	12	16	1,5	0,02
6.1-8	15	20	1,5	0,02
8.1-10	18	20	2	0,02
10.1-12	22	28	2	0,02
12.2-15	26	28	2	0,02
15.5-18	30	36	2	0,02

Gradation of the bore hole d_1 until 15,0 of 0,1 mm > 15,0 of 0,5 mm.

PUNCH GUIDE BUSH

ISO 8978



Item no.
5312.

Hardness
HRC 62 ± 2

Material
Case-hardened steel as chosen by manufacturer.

Inside and outside grinded in tolerance, with insertion chamfer.

d_1	d_2	l_1	r	t
H6	n6			
1-2.3	5	8	1	0,01
1.6-3	6	12,5	1	0,01
2-3.5	8	12,5	1,5	0,01
3-5	10	16	2	0,01
4-7.2	13	16	2	0,01
6-8.8	16	20	2	0,01
7.5-11.3	20	20	2,5	0,01
11-16.6	25	25	2,5	0,01
15-20	32	25	4	0,01
18-27	40	32	4	0,01
26-36	50	40	4	0,01

Gradation of the bore hole until d_1 : 16,6 mm and d_2 : 25,0 mm = 0,1 mm

Gradation of the bore hole from d_1 : 15,0 mm and d_2 : 32,0 mm = 0,5 mm